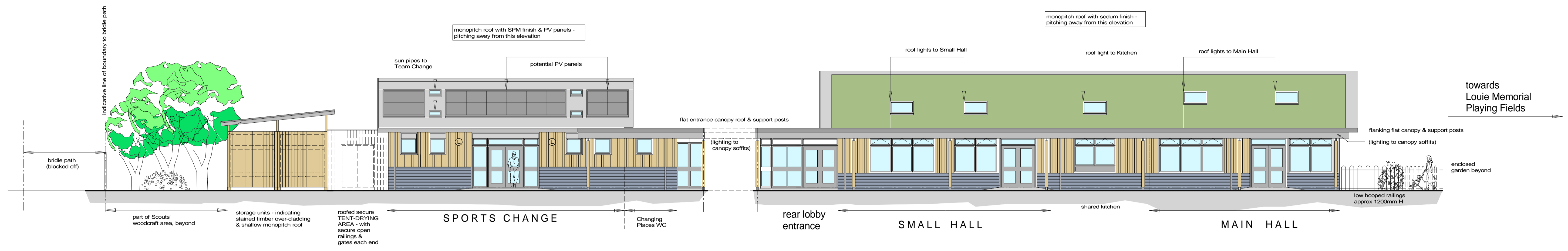
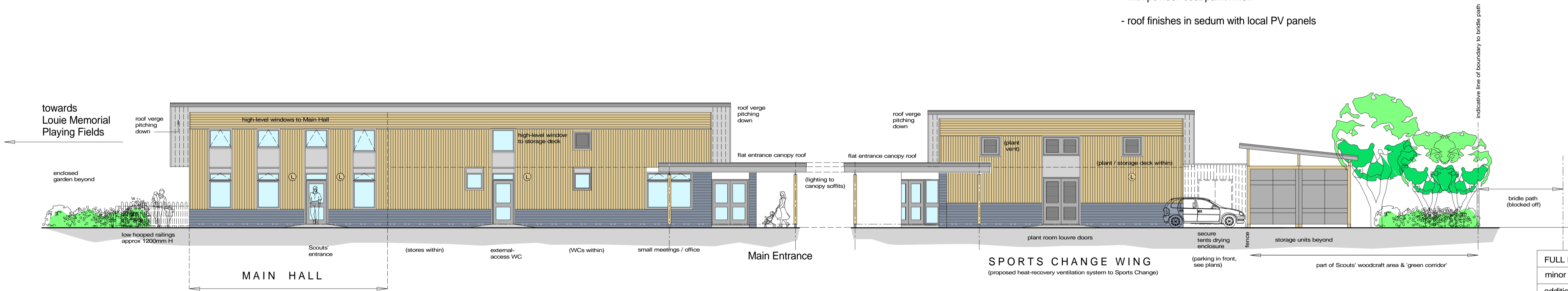


Notes  
All dimensions must be checked on site & not scaled from this drawing



'UNFOLDED' SOUTH ELEVATION - VIEW FROM MUGA SIDE  
(retained MUGA fence not drawn, see plans for line & height)

- PROPOSED EXTERNAL MATERIALS
- plinth in blue/grey engineering brick
  - cladding in vertical timber or similar panelling
  - composite windows & doors with external aluminium with powder-coat paint finish
  - roof finishes in sedum with local PV panels



'UNFOLDED' NORTH ELEVATION - VIEW FROM CAR PARK SIDE

FULL PLANNING APPLICATION

minor title change	8.3.19	sw	P5
additional notes	18.2.19	sw	P4
monopitch roof option	25.1.19	sw	P3
double-pitch roof option - issue to PC	15.1.19	sw	P2
preliminary QS issue	17.10.18	sw	P1
Revisions	Date	by	Rev

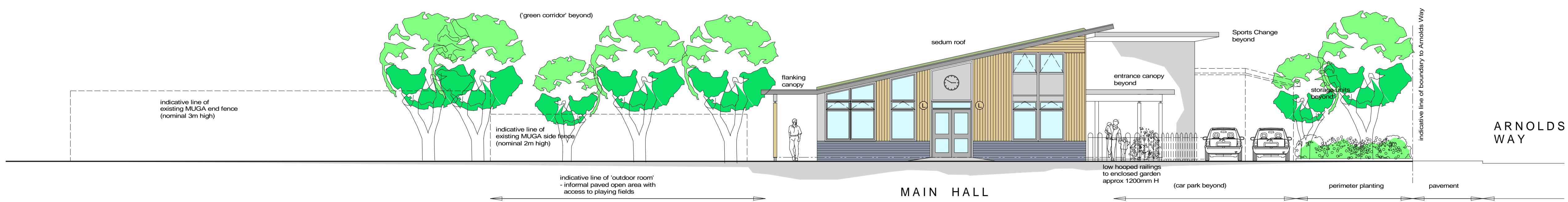
Client  
North Hinksey Parish Council

Project  
LOUIE MEMORIAL PAVILION SITE  
Arnold Way Oxford OX2 9JD  
'UNFOLDED' ELEVATIONS - MONOPITCH ROOF FORM  
read with Plan 404(P11)



STANHOPE WILKINSON ASSOCIATES ARCHITECTS  
2 Swinford Farm Eynsham Oxford OX29 4BL  
Tel: (01865)883222  
E-mail: office@swa-architects.co.uk

Scales 1:100 @ A1	Date	by
1:200 @ A3	16.10.2018	SW



NORTH EAST GABLE ELEVATION  
- to enclosed garden  
view from Louie Memorial Playing Fields

Job No.	Drawing No.	Rev.
18367	410	P5